

Conectores de datos RJ45 UTP Cat.6 y Cat. 6A - Hembra UTP/FTP RJ45 UTP/FTP Cat.6 and Cat.6A Data Connectors- Female

Ref. 209901 / 209921 / 209903 / 209923

Art.Nr. CAT6B-U / CAT6AB-U / CAT6B-F/ CAT6A-F



Introducción / Introduction

El RJ45 es un conector comunmente utilizado para redes de pares (2 hilos de cobre) o redes de pares trenzados (8 hilos de cobre). Se utiliza de forma habitual en redes de pares trenzados con estándares TIA/EIA-568-A/B. El diseño específico de esta referencia, permite su uso en redes de categoría Cat5e (Hasta 100MHz) , Cat6 (Hasta 250MHz) o Cat6A (Hasta 500MHz). Según la referencia seleccionada, se compatibilizarán estos con redes UTP (sin blindaje) o FTP (con blindaje).

The RJ45 is a connector commonly used for pair networks (2 copper wires) or twisted pair networks (8 copper wires). It is generally used in twisted pair networks with TIA / EIA-568-A / B standards. The specific design of this reference, allows its use in Cat5e (Up to 100MHz) , Cat6 (Up to 250MHz) or Cat6A (Up to 500MHz) category networks. According to the selected reference, these will be compatible with UTP networks (without shielding) or FTP (with shielding).

Especificaciones / Specifications

| Referencia | Reference | | 209901 | 209921 | 209903 | 209923 |
|----------------------------|------------------------|------------------------------|--------------------|----------------------------|---------------------|----------------------------|
| Eléctricas | | Electrical | | | | |
| Tensión máxima | Maximum Voltage | V _{DC} | 150 | 125 | 150 | |
| Intensidad máxima | Maximum current | A | 1,5 | | | |
| Resistencia de contacto | Contact resistance | mΩ | 100 | | | |
| Resistencia de aislamiento | Insulation resistance | MΩ | 500 | 1000 | 500 | |
| Resistencia dieléctrica | Dielectric strength | 60 Hz / 1 min | 1000 | 750 | 1000 | |
| Óptimo para categorías | Optimal for categories | Cat. | 5UTP, 5e UTP, 6UTP | 5UTP, 5e UTP, 6UTP, 6A UTP | 5FTP, 5e FTP, 6 FTP | 5FTP, 5e FTP, 6FTP, 6A FTP |
| Mecánicas | | Mechanical | | | | |
| Salida cable datos | Data cable output | ° | 90/180 | 180 | | |
| Vida operativa | Operating life | Conexiones Times plugging | 1500 | 750 | 1500 | 1500 |
| Peso | Weight | g | 6,4 | 6,4 | 21,4 | 21,4 |
| Dimensiones | Dimensions | mm | 16 x 20,7 x 32 | 16,6 x 22,4 x 30,4 | 16,1 x 16 x 38 | |

Características / Features

Montaje fácil y rápido. Sin necesidad de herramientas especiales / Easy and fast mounting without special tools required

Cumplen plenamente con las Normas internacionales correspondientes / Fully comply with the pertinent international standards

Admite cableado T568A y T568B con esquema codificado de colores / Available in both T568A/B wiring. Wire map are printed clearly on jacks

Contactos: bronce fosforado bañados en oro / Contact: phosphor bronze with gold plating

Compatibilidad / Compatibility

| Ref. | 219602 | 219701 | 219502 | 219901 | 219910 | 212201 | 2123 | 212302 | 212305 | 212310 | 212101 | 219301 | 219302 | 219101 |
|--------|--------|--------|--------|--------|--------|--------|------|--------|--------|--------|--------|--------|--------|--------|
| 209901 | ✓ | ✓ | ✗ | ✓ | ✓ | ✓ | ✓ | ✓ | ✓ | ✓ | ✗ | ✗ | ✗ | ✗ |
| 209921 | ✓ | ✓ | ✗ | ✓ | ✓ | ✓ | ✓ | ✓ | ✓ | ✓ | ✗ | ✗ | ✗ | ✗ |
| 209903 | ✓ | ✓ | ✓ | ✓ | ✓ | ✓ | ✓ | ✓ | ✓ | ✓ | ✓ | ✗ | ✗ | ✗ |
| 209923 | ✓ | ✓ | ✓ | ✓ | ✓ | ✓ | ✓ | ✓ | ✓ | ✓ | ✓ | ✓ | ✓ | ✗ |

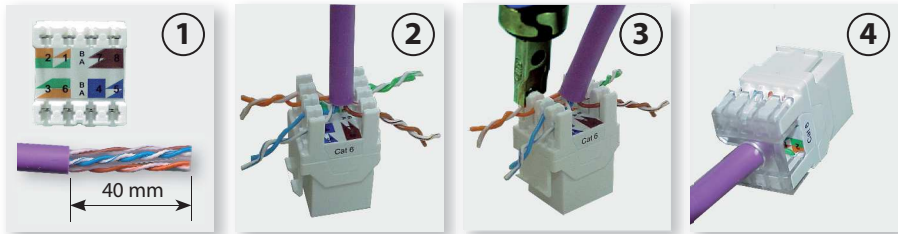
✓ Compatible / Compatible

✓ Compatible, pero existen opciones mejores / Compatible, but there are better choices

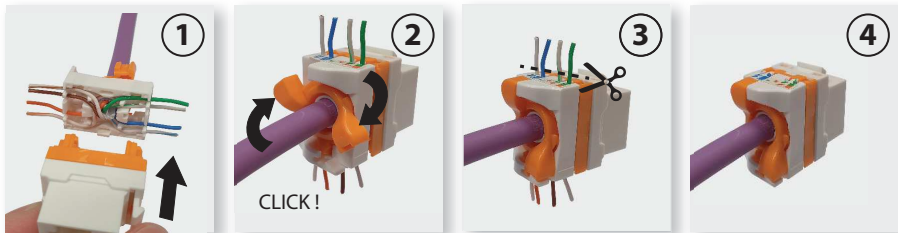
✗ Incompatible / Incompatible

Ejemplo de montaje / Mounting example

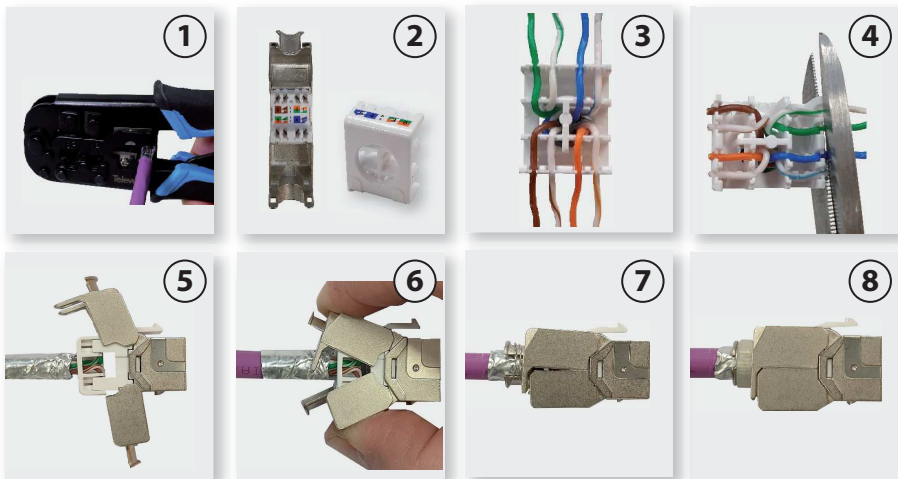
Cat. 6 UTP



Cat. 6A UTP

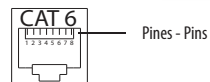


Cat. 6 FTP - Cat. 6A FTP



Tipo de conectorización / Connectorization type

| IDC Nº | EIA / TIA 568 A | | EIA / TIA 568 B | |
|--------|-----------------|-------------------------------|-----------------|-------------------------------|
| | Pair | Color cable - Wire color | Pair | Color cable - Wire color |
| PIN 5 | 1 | Blanco/Azul - White/Blue | 1 | Blanco/Azul - White/Blue |
| PIN 4 | | Azul - Blue | | Azul - Blue |
| PIN 1 | 3 | Blanco/Verde - White/Green | 2 | Blanco/Naranja - White/Orange |
| PIN 2 | | Verde - Green | | Naranja - Orange |
| PIN 3 | 2 | Blanco/Naranja - White/Orange | 3 | Blanco/Verde - White/Green |
| PIN 6 | | Naranja - Orange | | Verde - Green |
| PIN 7 | 4 | Blanco/Marrón - White/Brown | 4 | Blanco/Marrón - White/Brown |
| PIN 8 | | Marrón - Brown | | Marrón - Brown |



Suministro / Supply

| | |
|---------------------|----------------------------------|
| Forma de suministro | Caja de plástico con 10 unidades |
| Supply form | Plastic box with 10 units |

Fabricante / Manufacturer: Televés S.A.U. Rúa B. de Conxo, 17,
15706 Santiago de Compostela, A Coruña. Spain
www.televés.com

